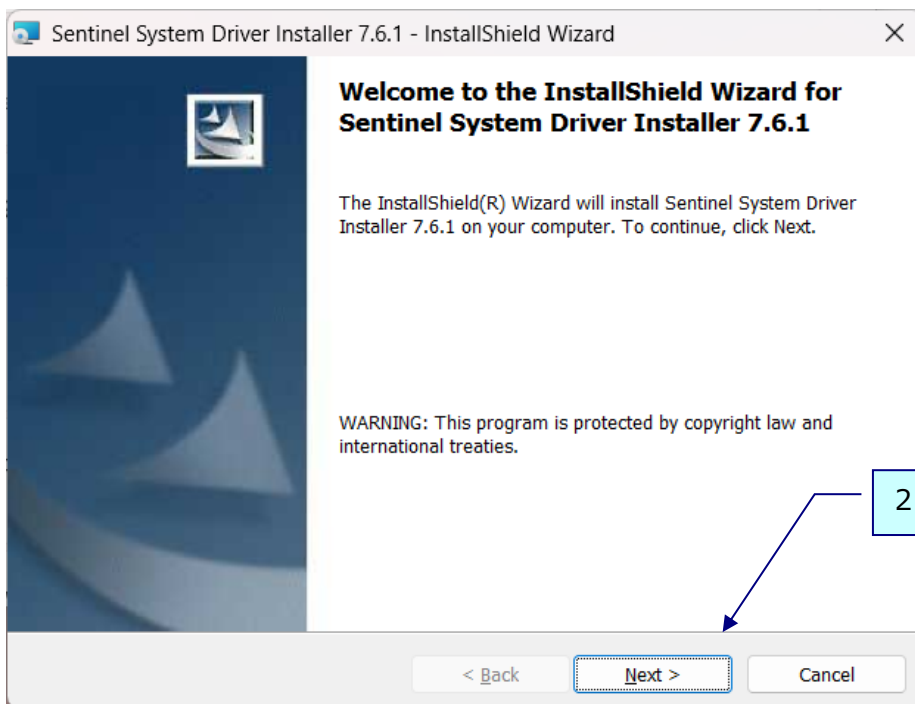
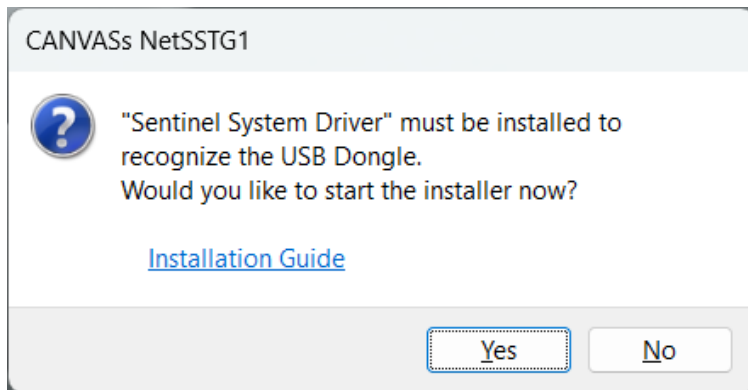
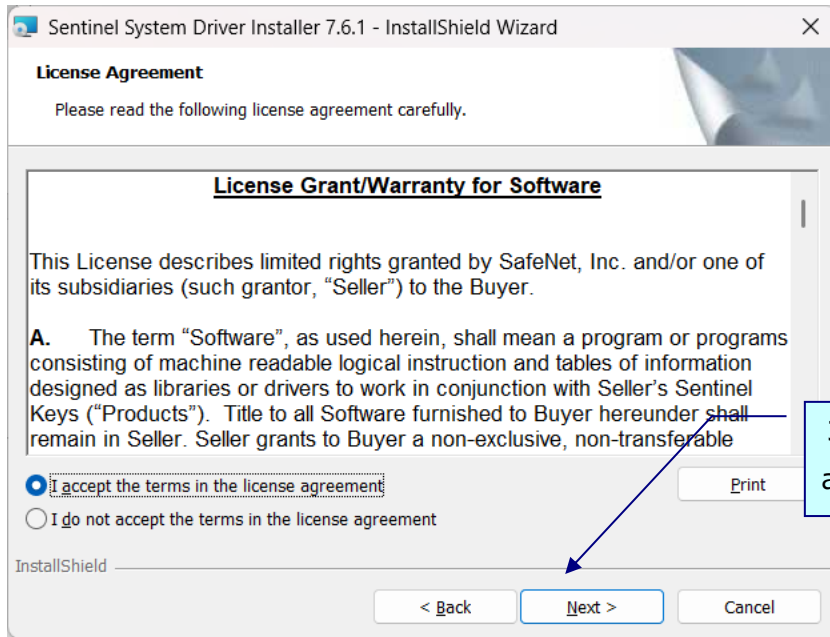


<How to Install Sentinel System Driver>

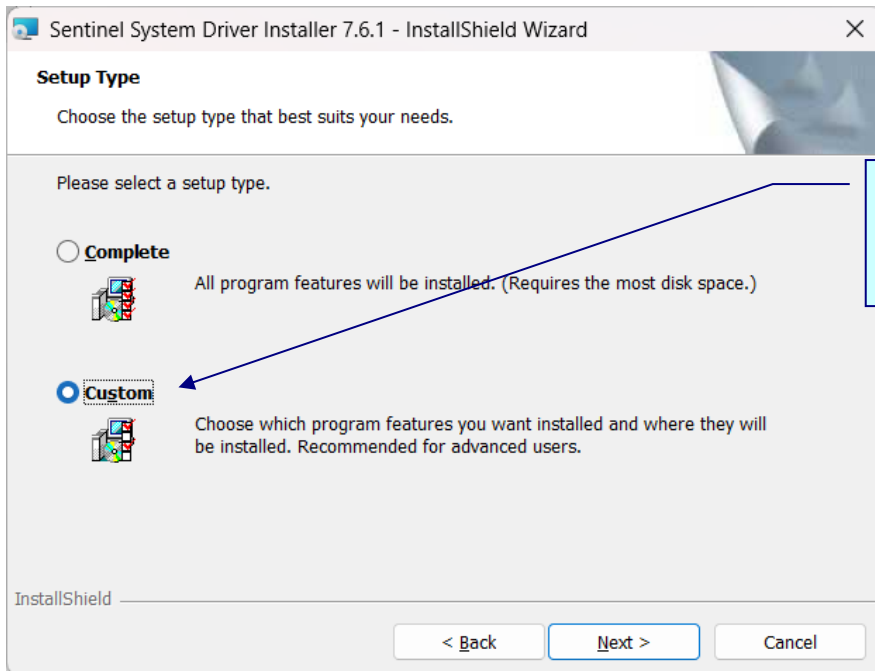
 **Do not plug in the USB dongle during installation!**

1. Click "Yes" on the message window at SSTG1 startup to run the Sentinel System Driver installer.

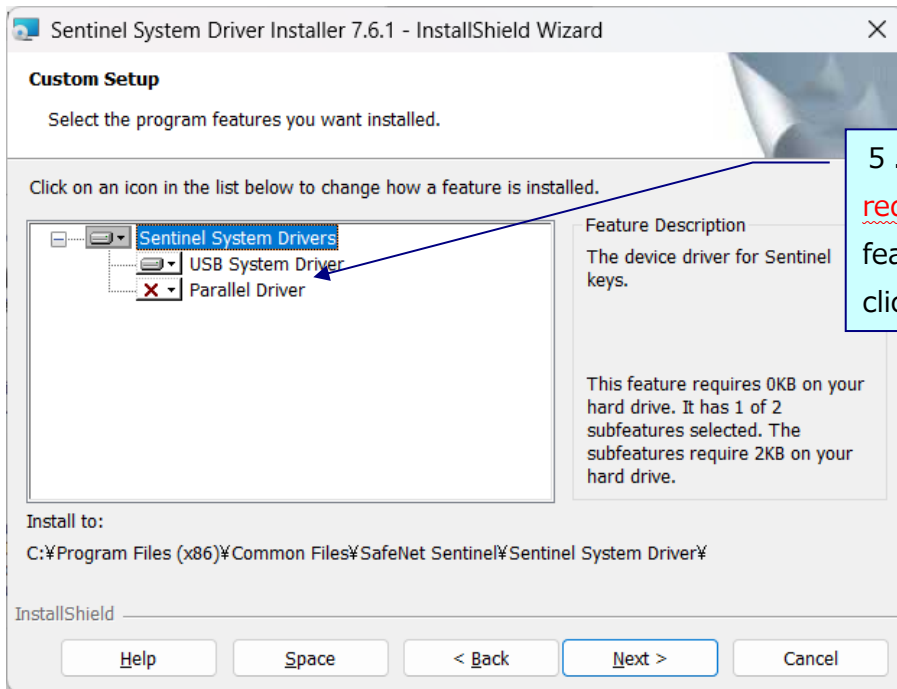




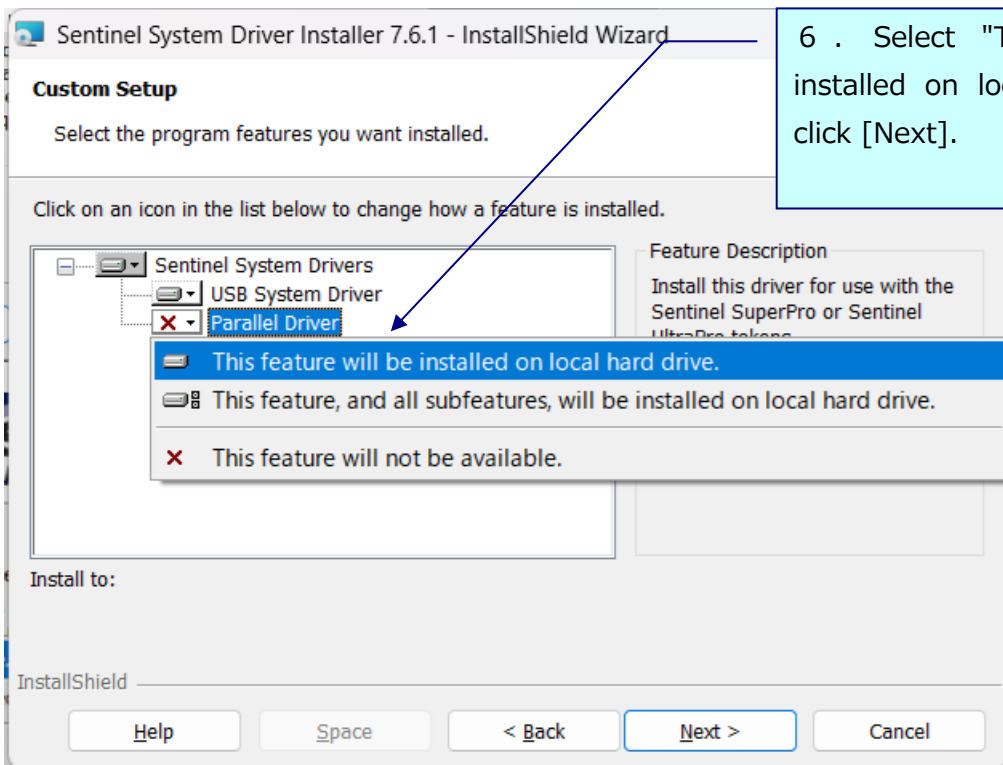
3 . Select "I accept the terms...", and click [Next]



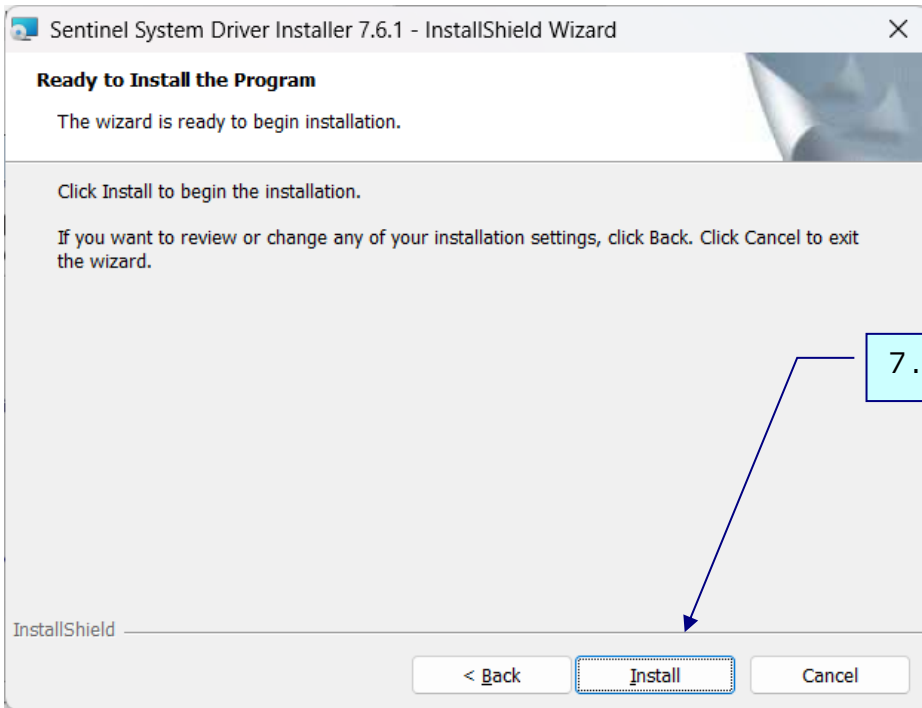
4 . Select "Custom", and click [Next]



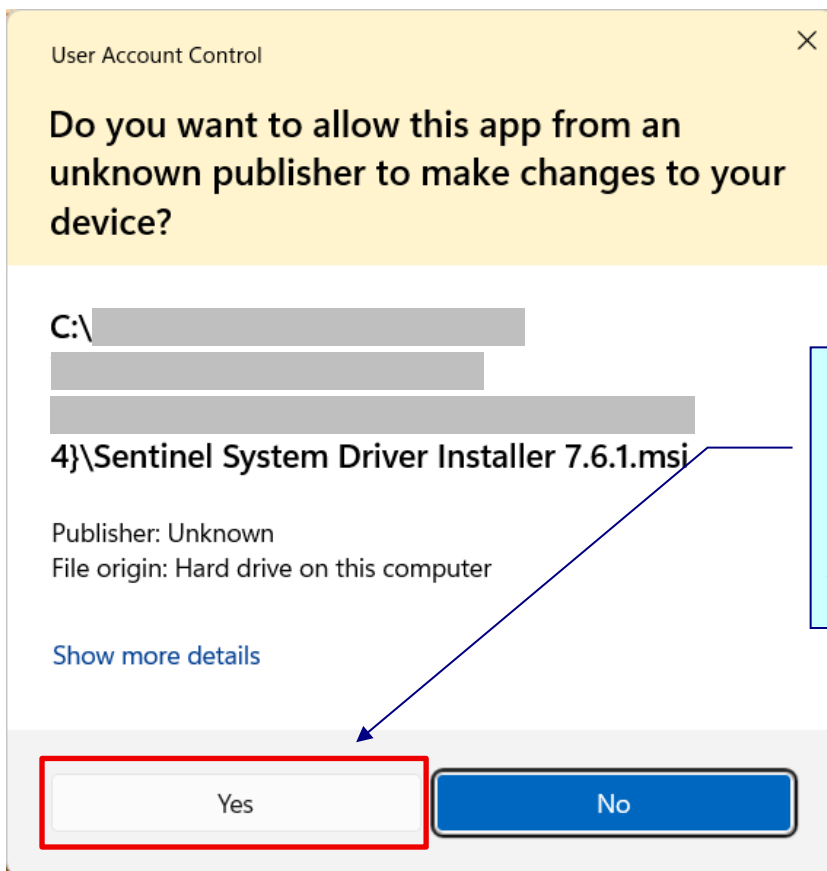
5 . If "Parallel Driver" has a red "X" icon and says "This feature will not be available", click ▼.



6 . Select "This feature will be installed on local hard drive.", and click [Next].

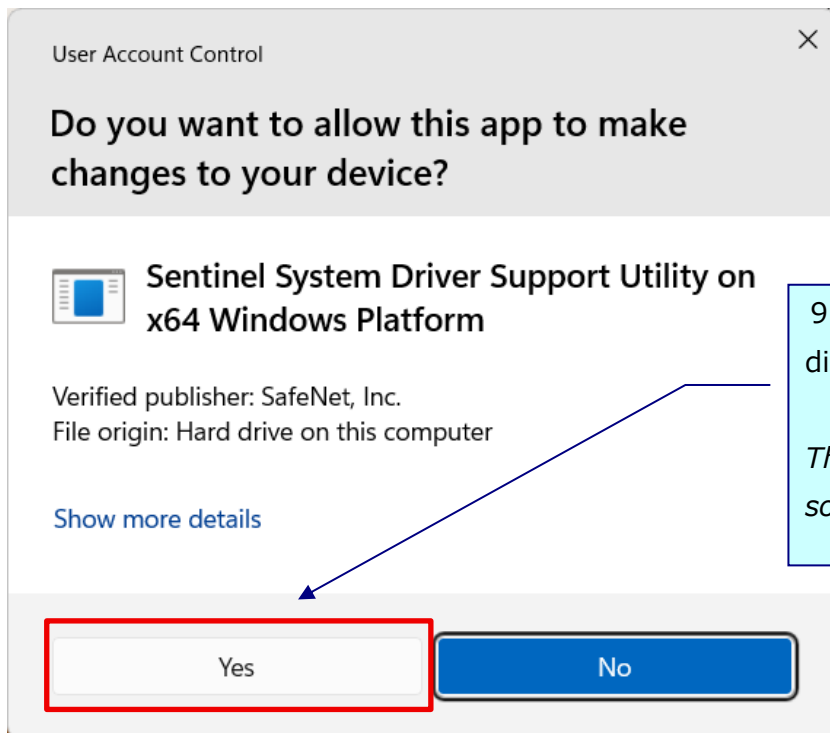


7. Click [Install].



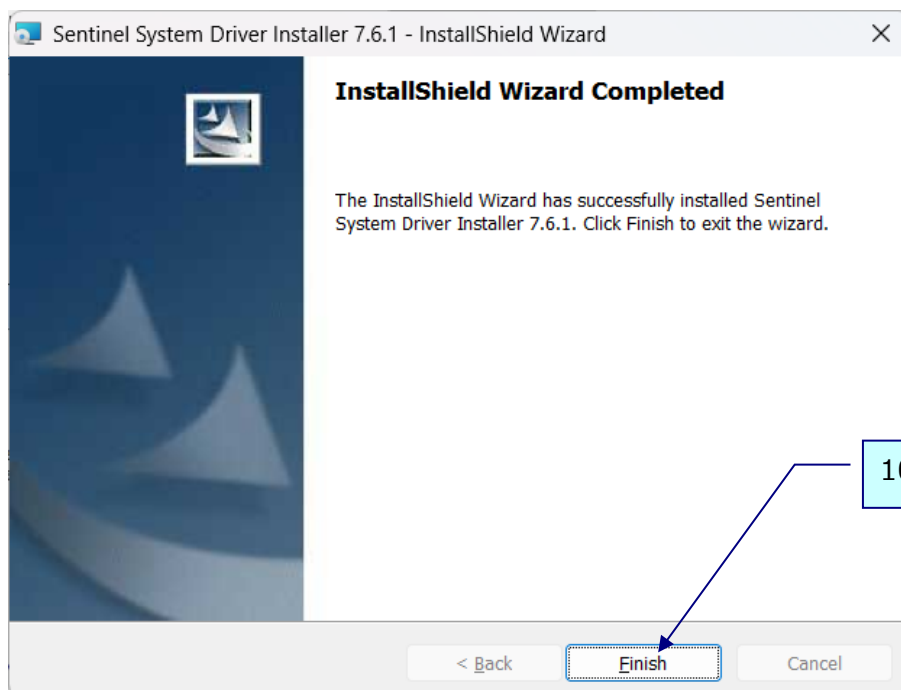
8. Click "Yes" if this message is displayed.

This message may not appear in some cases.



9. Click "Yes" if this message is displayed.

This message may not appear in some cases.



10. Click [Finish].

11. Restart your PC.